

# BUYERS GUIDE

By *Coffman*

OUTDOOR LIVING | 2025

# TABLE OF CONTENTS

---

<b>Railing Options</b>	<b>04</b>
<b>enEXO System Anatomy</b>	<b>05</b>
<b>Product Overview</b>	
Traditional Picket System	<b>06</b>
Open Mid Rail System	<b>08</b>
Glass Compatible System	<b>10</b>
<b>Universal Accessories</b>	
Mounting Kits	<b>12</b>
Universal Accessories	<b>13</b>
<b>Index</b>	
Top Rail	<b>14</b>
Insert Panels	<b>14</b>
Post Kits	<b>15</b>
Mounting Kits	<b>16</b>
Post Caps and Accessories	<b>17</b>
<b>Resources</b>	<b>18</b>
<b>Warranty Information</b>	<b>19</b>

**Coffman**<sup>®</sup>

*Let's Build Something Great Together*

As the industry's specialty building materials leader for over 150 years, we are proud to be your trusted business partner.

## OUTDOOR LIVING

---

**enEXO**<sup>™</sup>  
RAILING SYSTEMS

**IG** | RAILING<sup>®</sup>

## INDOOR LIVING

---

**Coffman**<sup>®</sup>  
STAIR PARTS

**NUSTAIR**<sup>®</sup>

**IDEAL**  
stair parts

## SPECIALTY PRODUCTS

---

**U2** Fasteners<sup>™</sup>





enEXO<sup>TM</sup>  
RAILING SYSTEMS



**Exceptional Engineering. Effortless Installation.**

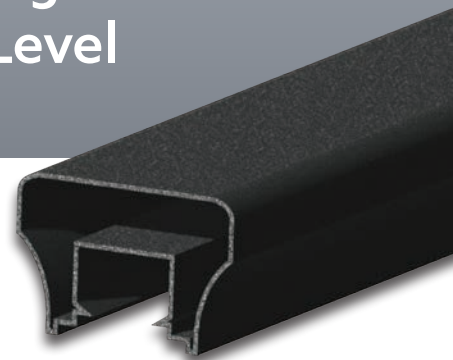
Aluminum Railing Intelligently Designed  
for *Fast Installation* at Any Skill Level



## THE **FUTURE** OF DECK INSTALLATION HAS ARRIVED!

*Fewer tools, less time, minimal effort.*

Engineered for effortless installation from start to finish, enEXO's concealed Internal Mounting System offers a sleek, precision-fit top rail connection with built-in flexibility for measurements. Pre-welded panels and pre-drilled posts simplify and accelerate the entire process, making it one of the fastest systems on the market. Deliver the modern style and unmatched performance your customers demand—outpace the competition with enEXO!



By

Coffman

Scan to visit us online!  
[www.enexorailing.com](http://www.enexorailing.com)

800.810.9204 | [sales@coffmansbp.com](mailto:sales@coffmansbp.com)



## RAILING OPTIONS

### TOP RAIL KALLOS GRASPABLE RAIL



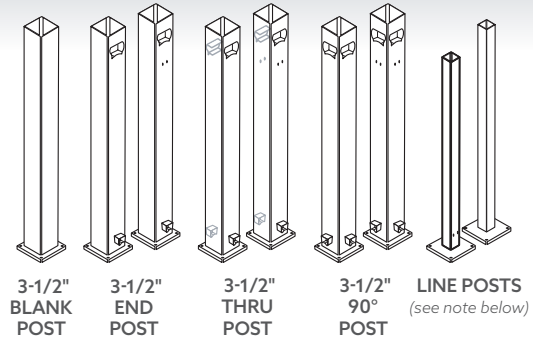
8', 12', 16', AND 20'

### POST KITS

#### • 3-1/2" PRIMARY POSTS

#### • LINE POSTS

*\*Stair or Heavy Duty available for all systems*



INCLUDED IN  
THE POST KIT



Hardware,  
Panel Mounts,  
Cap, & Base

UP TO  
20' RAIL  
SPANS!

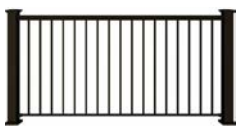
**Heavy Line Post** | 1.688" post with 3/16" wall thickness for added strength. Pre-cut to fit under the top rail in level applications. Pre-drilled pilot holes for bottom mounts included.

**Stair Line Posts** | Thin-wall design for easy mounting with self-tapping screws. Taller to allow cutting to the desired top rail elevation. NOT pre-drilled as exact rise/run and post placement vary.

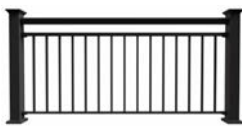
### INFILL

#### PICKET

PRE-WELDED, FLAT OR STAIR - 6' OR 8' INSERTS



TRADITIONAL PICKET

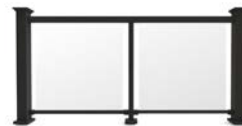


OPEN MID RAIL PICKET



PRE-WELDED  
RAKE

#### GLASS SYSTEM



*Designed for 1/4" tempered glass with polished sides.  
Glass not included.*

### FEATURES

- Saves time — effortless installation!
- Fully-welded insert panels - 6' and 8' sections — No panel assembly
- Installs fast with pre-drilled posts — Mounting hardware **Included**
- Error-Tolerant System — Allows for minor miscalculations
- 30-year Lifetime Warranty

### POST CAPS

STANDARD ORNAMENTAL, LOW VOLTAGE, SOLAR



ORNAMENTAL CAP  
*(included in post kit)*



LOW VOLTAGE  
HALO CAP



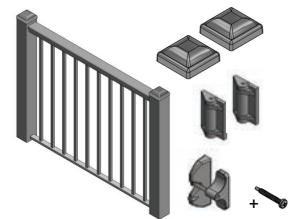
LOW VOLTAGE  
COMBO CAP



LOW VOLTAGE  
DOWN LIGHT CAP



SOLAR CAP

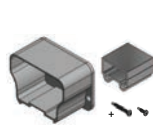


KNOCKDOWN GATE KIT  
(3-1/2" POSTS)

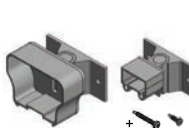
### MOUNTING KITS



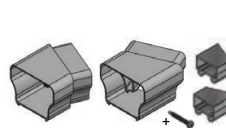
35° STAIR  
MOUNT KIT



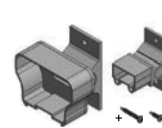
STRAIGHT/WALL  
MOUNT KIT



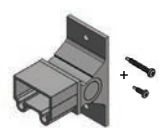
MITERED CORNER  
ADJUSTABLE  
MOUNT KIT



45° MOUNT KIT  
INSERT SYSTEM



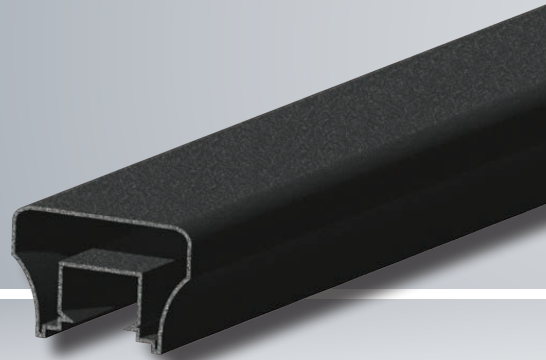
ADJ MOUNT  
KIT FOR  
STAIRS/RAMPS



ADJ BOTTOM  
MOUNT KIT FOR  
STAIR/RAMP

AAMA 2605 Colors are available by special order.  
enEXO Railing Systems by Coffman ICC-ES ESR-4813.

# MEET **KALLOS**, THE BEAUTIFULLY-DESIGNED MODERN FLAT-TOP RAIL



## ENEXO SYSTEM ANATOMY

Our enEXO Railing System is engineered for durability, ease of installation, and sleek design, delivering exceptional performance every time. Explore the image below to see how each feature works together to create a robust, stylish, and easy-to-install railing system.

*Here's what sets enEXO apart:*

### HIDDEN INTERNAL MOUNTING SYSTEM

Conceals less-than-perfect end cuts, offering flexibility and a precision fit while simplifying installation with fewer tools.

### KALLOS — GRASPABLE, PRECISION-FIT TOP RAIL

Featuring a sleek, solid connection, the Kallos top rail is ICC Certified (ESR-4813) and Type II ADA Compliant for accessibility and safety. As an added bonus, its wide flat top rail is perfect for holding drinks.

### VERSATILE RAIL LENGTHS

8', 12', 16', & 20' - Longer, cleaner lines for over the top rail designs.



### PRE-DRILLED POSTS

Designed for effortless installation, ensuring accurate alignment and a professional finish.

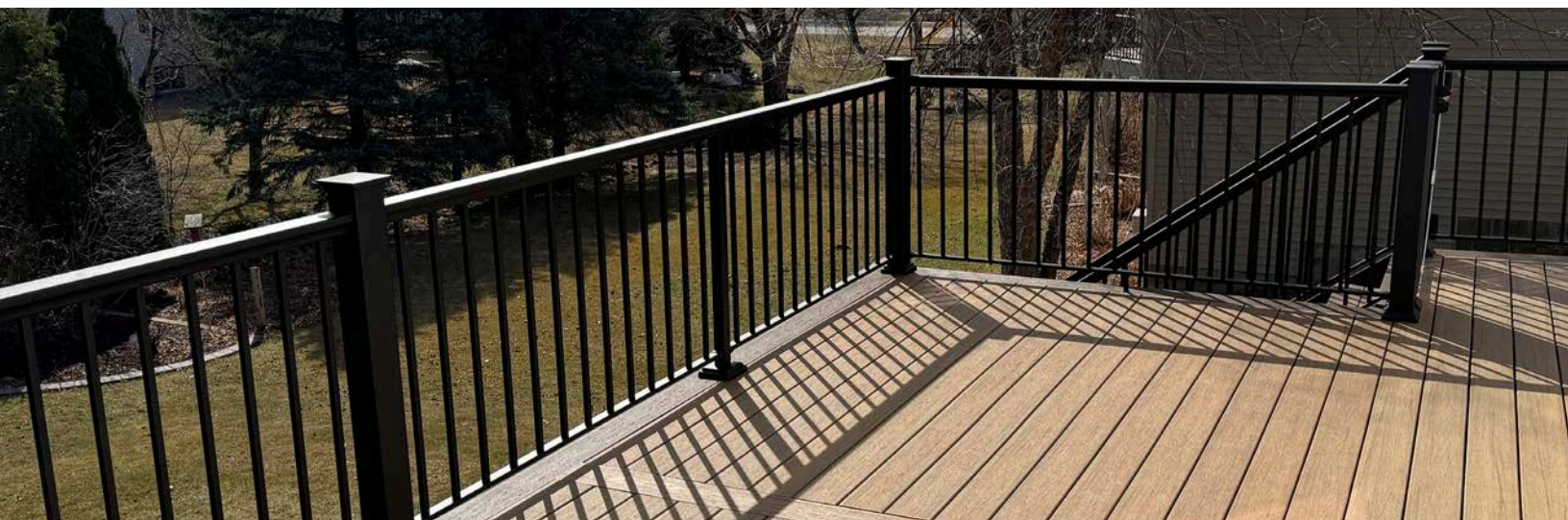
### PRE-WELDED PICKET PANELS

Pre-welded to ensure superior durability to withstand tough handling, making installation easier and more reliable - a flawless installation every time.

## EVERYTHING IN THE BOX!

From mounting hardware to fasteners, our system provides all the essentials for a smooth, efficient setup.





## TRADITIONAL PICKET SYSTEM

*Perfect for decks, patios, and balconies, our Traditional Picket System is the go-to choice for reliable performance and timeless beauty. Crafted from powder-coated aluminum, this railing resists corrosion and rust and is designed to meet the demands of modern outdoor living. Its modern, timeless design enhances the view and elevates the outdoor living experience, providing homeowners with a product that is as beautiful as it is practical.*

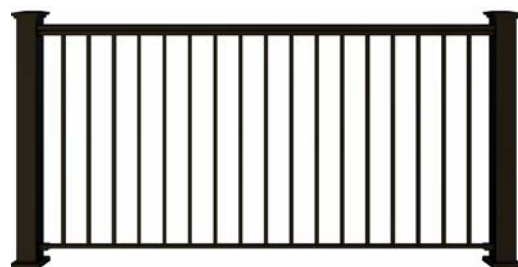


Engineered for maximum install efficiency and durability, our railing features a unique internal mounting system that simplifies installation while concealing imperfections for a polished, professional result. Pre-welded panels add another layer of convenience and durability, enabling a flawless installation that stands up to both the elements and wear and tear over time.

With versatile rail lengths, including options for longer runs up to 20', this system offers the flexibility to handle a variety of project needs while maintaining clean, uninterrupted lines. The graspable top rail is both functional and stylish, meeting safety requirements without sacrificing visual appeal.

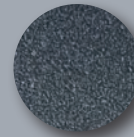
### FEATURES

- Saves time — effortless installation!
- Fully-welded insert panels - 6' and 8' sections — No panel assembly
- Installs fast with pre-drilled posts — Mounting hardware **Included**
- Error-Tolerant System — Allows for minor miscalculations
- 30-year Lifetime Warranty



# TRADITIONAL PICKET SYSTEM COMPONENTS

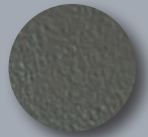
ARCHITECTURAL GRADE  
AAMA 2604 COLORS



TEXTURED  
BLACK

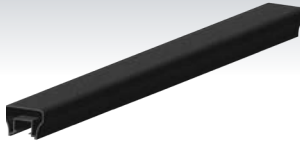


WHITE  
CLOUD



TEXTURED  
BRONZE

## KALLOS GRASPABLE TOP RAIL



8'

806617 - B  
806669 - W  
806670 - BR

12'

806616 - B  
806667 - W  
806668 - BR

16'

806615 - B  
806665 - W  
806666 - BR

20'

806614 - B  
806663 - W  
806664 - BR

**FULL  
MOUNTING  
BRACKET  
SELECTION**

page 12

## POST KITS

### 3-1/2" POSTS



**3-1/2" 90° Post Kit**

806624 - B  
806692 - W  
806693 - BR



**3-1/2" End Post Kit**

806625 - B  
806694 - W  
806695 - BR



**3-1/2" Line Post Kit**

806626 - B  
806696 - W  
806697 - BR



**3-1/2" Blank Post Kit**

806627 - B  
806707 - W  
806708 - BR

#### EVERYTHING IN THE BOX!

*Post kits include all hardware and mounts needed for assembly.  
(See index - page 13)*

### CROSS OVER LINE POSTS



**1.688" Heavy Duty Line Post Kit**

806629 - B  
806711 - W  
806712 - BR

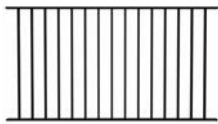


**1-5/8" Stair Line Post Kit**

806630 - B  
806713 - W  
806714 - BR

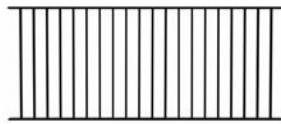
## INSERT PANELS & POST CAPS

### TRADITIONAL INSERT PANELS



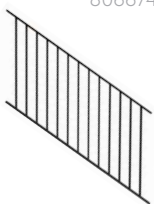
**6' - Panel**

806619 - B  
806673 - W  
806674 - BR



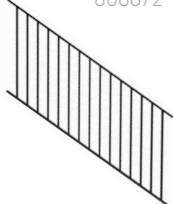
**8' - Panel**

806618 - B  
806671 - W  
806672 - BR



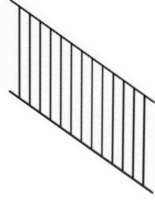
**6' - Rake Adjustable 32°-37°**

806620 - B  
806675 - W  
806676 - BR



**8' - Rake Adjustable 32°-37°**

806621 - B  
806677 - W  
806678 - BR



**6' - Adjustable Panel Adjusts 0°-40°**

806622 - B  
806679 - W  
806680 - BR

### POST CAPS



**Ornamental Cap**  
*(Included in post kit)*

806639 - B  
806740 - W  
806741 - BR



**Low Voltage Halo Cap**

806640 - B  
806742 - W  
806743 - BR



**Solar Cap**

806643 - B  
806748 - W  
806749 - BR



**Low Voltage Combo Cap**

806641 - B  
806744 - W  
806745 - BR



**Low Voltage Down Light Cap**

806642 - B  
806746 - W  
806747 - BR

**VIEW MORE  
ACCESSORIES**  
see pages 12-13





## OPEN MID RAIL PICKET SYSTEM

*If you're looking for a fresh take on our Traditional Picket System, the Open Mid Rail System delivers all the durability and reliability you expect with a bold, contemporary twist. While crafted from the same corrosion-resistant powder-coated aluminum, this system stands out with a distinctive floating top rail design that enhances the view and adds a touch of modern elegance.*

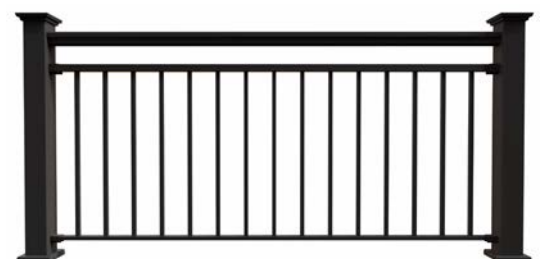


The Open Mid Rail System shares the same advanced internal mounting system and pre-welded panels as our Traditional Picket System, ensuring a streamlined installation and long-lasting performance. However, the floating top rail takes the aesthetic to the next level, creating an airy, open feel that perfectly complements outdoor living spaces.

With the versatility of rail lengths spanning up to 20', the Open Mid Rail System is ideal for longer runs and uninterrupted sightlines. Its graspable top rail remains both functional and stylish, meeting safety standards while emphasizing modern, understated elegance.

### FEATURES

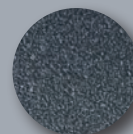
- Saves time — effortless installation!
- Fully-welded insert panels - 6' and 8' sections — No panel assembly
- Installs fast with pre-drilled posts — Mounting hardware **Included**
- Error-Tolerant System — Allows for minor miscalculations
- 30-year Lifetime Warranty





# OPEN MID RAIL SYSTEM COMPONENTS

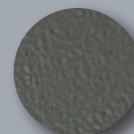
ARCHITECTURAL GRADE  
AAMA 2604 COLORS



TEXTURED  
BLACK

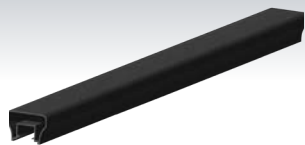


WHITE  
CLOUD



TEXTURED  
BRONZE

## KALLOS GRASPABLE TOP RAIL



8'

806617 - B  
806669 - W  
806670 - BR

12'

806616 - B  
806667 - W  
806668 - BR

16'

806615 - B  
806665 - W  
806666 - BR

20'

806614 - B  
806663 - W  
806664 - BR

**FULL  
MOUNTING  
BRACKET  
SELECTION**

page 12

## OPEN MID RAIL POST KITS

### 3-1/2" POSTS



**3-1/2" OMR  
90° Post Kit**

806698 - B  
806699 - W  
806700 - BR



**3-1/2" OMR  
End Post Kit**

806701 - B  
806702 - W  
806703 - BR



**3-1/2" OMR  
Line Post Kit**

806704 - B  
806705 - W  
806706 - BR



**3-1/2" Blank  
Post Kit**

806627 - B  
806707 - W  
806708 - BR

#### EVERYTHING IN THE BOX!

*Post kits include all  
hardware and mounts  
needed for assembly.  
(See index - page 13)*

### CROSS OVER LINE POSTS



**1.688"  
OMR Heavy Duty  
Line Post Kit**

806631 - B  
806715 - W  
806716 - BR

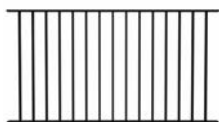


**1-5/8"  
OMR Stair Line  
Post Kit**

806632 - B  
806717 - W  
806718 - BR

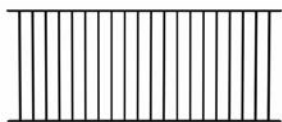
## INSERT PANELS & POST CAPS

### OPEN MID RAIL INSERT PANELS



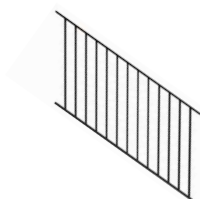
**6' - OMR Panel**

806684 - B  
806685 - W  
806686 - BR



**8' - OMR Panel**

806681 - B  
806682 - W  
806683 - BR



**6' - OMR Rake  
Adjustable 32°-37°**

806687 - B  
806688 - W  
806689 - BR

### POST CAPS



**Ornamental Cap**  
*(Included in post kit)*

806639 - B  
806740 - W  
806741 - BR



**Low Voltage Halo Cap**

806640 - B  
806742 - W  
806743 - BR



**Solar Cap**

806643 - B  
806748 - W  
806749 - BR



**Low Voltage  
Combo Cap**

806641 - B  
806744 - W  
806745 - BR



**Low Voltage  
Down Light Cap**

806642 - B  
806746 - W  
806747 - BR

**VIEW MORE  
ACCESSORIES**  
see pages 12-13



## GLASS COMPATIBLE SYSTEM

*Transform outdoor spaces with uninterrupted views and modern elegance using our Glass Compatible System. Designed to accommodate tempered 1/4" glass panels, this system allows you to showcase scenic landscapes and breathtaking views. We've engineered the ideal system for installers to effortlessly meet today's outdoor living trends.*



Crafted from powder-coated aluminum, this system resists corrosion and weather damage, delivering long-lasting durability while complementing the clean, minimalist look of the glass panels. enEXO's innovative internal mounting system ensures a streamlined installation, providing a flawless, polished finish that maximizes visibility without compromising strength or safety.

Available in versatile rail lengths to suit a range of project needs, our Glass Compatible System gives you the flexibility to design expansive, unobstructed spaces while maintaining the performance and reliability you expect from our premium aluminum railing systems.

Combining sleek design and panoramic views, enEXO's Glass Compatible System is the perfect choice to elevate any outdoor living experience.

### FEATURES

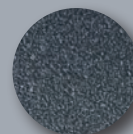
- 5' Glass rail firmly secures 1/4" tempered glass (glass not included)
- Fully welded insert panels - 6' and 8' sections
- Installs fast with pre-drilled posts – Mounting hardware **Included**
- AMMA 2604 powder coating
- 30-year Lifetime Warranty





# GLASS COMPATIBLE SYSTEM COMPONENTS

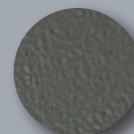
ARCHITECTURAL GRADE  
AAMA 2604 COLORS



TEXTURED  
BLACK

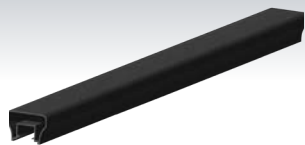


WHITE  
CLOUD



TEXTURED  
BRONZE

## KALLOS GRASPABLE TOP RAIL



8'

806617 - B  
806669 - W  
806670 - BR

12'

806616 - B  
806667 - W  
806668 - BR

16'

806615 - B  
806665 - W  
806666 - BR

20'

806614 - B  
806663 - W  
806664 - BR

**FULL  
MOUNTING  
BRACKET  
SELECTION**

page 12

## POST KITS

### 3-1/2" POSTS



**3-1/2"  
90° Post Kit**

806624 - B  
806692 - W  
806693 - BR



**3-1/2" End  
Post Kit**

806625 - B  
806694 - W  
806695 - BR



**3-1/2" Line  
Post Kit**

806626 - B  
806696 - W  
806697 - BR



**3-1/2" Blank  
Post Kit**

806627 - B  
806707 - W  
806708 - BR

#### EVERYTHING IN THE BOX!

*Post kits include all  
hardware and mounts  
needed for assembly.  
(See index - page 13)*

### CROSS OVER LINE POSTS



**1.688"  
Heavy Duty  
Line Post Kit**

806629 - B  
806711 - W  
806712 - BR



**1-5/8"  
Stair Line  
Post Kit**

806630 - B  
806713 - W  
806714 - BR

## INFILL & POST CAPS

### GLASS INFILL KIT



**5' - Glass Bottom Rail Kit with Top Rail Insert**

806623 - B  
806690 - W  
806691 - BR

### POST CAPS



**Ornamental Cap**  
*(Included in post kit)*

806639 - B  
806740 - W  
806741 - BR



**Low Voltage Halo Cap**

806640 - B  
806742 - W  
806743 - BR



**Solar Cap**

806643 - B  
806748 - W  
806749 - BR



**Low Voltage  
Combo Cap**

806641 - B  
806744 - W  
806745 - BR



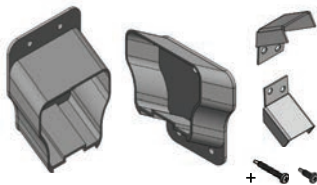
**Low Voltage  
Down Light Cap**

806642 - B  
806746 - W  
806747 - BR

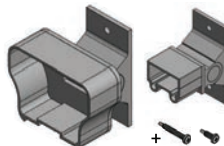
**VIEW MORE  
ACCESSORIES**  
see pages 12-13

## STAIR MOUNT KITS

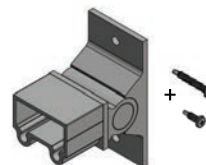
### STANDARD AND ADJUSTABLE MOUNTS



**35° Stair Mount Kit**  
806633 - B  
806719 - W  
806820 - BR



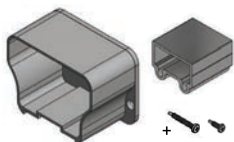
**ADJ Mount Kit  
for Stairs/Ramps**  
806644 - B  
806750 - W  
806751 - BR



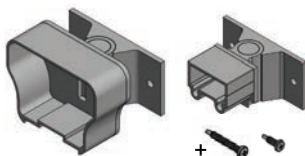
**ADJ Bottom Mount  
Kit for Stair/Ramp**  
806645 - B  
806752 - W  
806753 - BR

## MOUNTING KITS

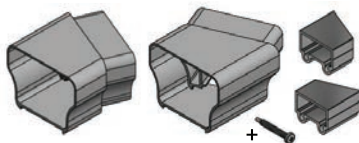
### STRAIGHT MOUNTS



**Straight/Wall Mount Kit**  
806635 - B  
806723 - W  
806724 - BR

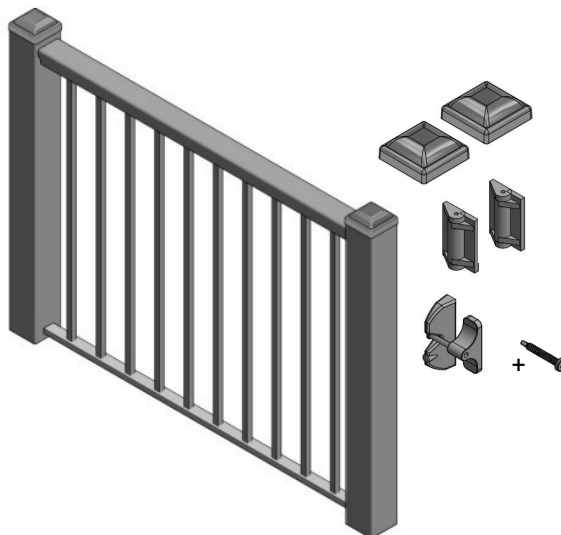


**Mitered Corner  
Adjustable Mount Kit**  
806636 - B  
806725 - W  
806726 - BR



**45° Mount Kit Insert System**  
806637 - B  
806727 - W  
806728 - BR

### GATE KITS



**Knockdown Gate Kit**  
(3-1/2" Posts - Maximum opening size 54")  
806638 - B  
806729 - W  
806730 - BR



# FINISHING TOUCHES

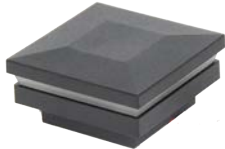
## UNIVERSAL ACCESSORIES

3-1/2" POST KITS  
INCLUDE  
(1) ORNAMENTAL CAP

### POST CAPS



**Ornamental Cap**  
(Included in post kit)  
806639 - B  
806740 - W  
806741 - BR



**Low Voltage Halo Cap**  
806640 - B  
806742 - W  
806743 - BR



**Low Voltage Combo Cap**  
806641 - B  
806744 - W  
806745 - BR



**Low Voltage Down Light Cap**  
806642 - B  
806746 - W  
806747 - BR



**Solar Cap**  
806643 - B  
806748 - W  
806749 - BR

## INCLUDED IN THE BOX

### 3-1/2" POST KITS



- 3-1/2" TRADITIONAL POST KITS**  
Pre-Drilled Post – Included hardware & brackets:
- Ornamental post cap (non-lighted)
  - (5) #10x1-1/2" screws
  - (8) #10x3/4" screws
  - (2) Bottom mounts
  - Baseplate cover



- 3-1/2" OPEN MID RAIL POST KITS**  
Pre-Drilled Post– Included hardware & brackets:
- Ornamental post cap (non-lighted)
  - (8) #10x1-1/2" screws
  - (10) #10x3/4" screws
  - (2) Bottom mounts
  - (2) Mid-rail mounts
  - Baseplate cover

### LINE POST KITS



- HEAVY DUTY UNIVERSAL LINE POST KITS**  
Pre-Drilled – Included hardware & brackets:
- Top rail mounting bracket
  - (5) #10x1-1/2" screws
  - (8) #10x3/4" screws
  - (2) Bottom mounts
  - Baseplate cover



- STAIR LINE POST KITS**  
Easy-Tap/Cuttable – Included hardware & brackets:
- Adjustable top rail mounting bracket
  - (5) #10x1-1/2" screws
  - (8) #10x3/4" screws
  - (2) Bottom mounts (up & down)
  - Baseplate cover

## TOUCH-UP PAINT



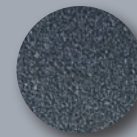
**Black**  
806646



**White**  
806754



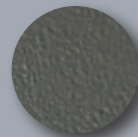
**Bronze**  
806755



TEXTURED  
BLACK



WHITE  
CLOUD



TEXTURED  
BRONZE

DESCRIPTION		BLACK	WHITE	BRONZE
KALLOS TOP RAIL (GRASPABLE)				
1	NXO-6840-20' Kallos Top Rail 20'	806614	806663	806664
2	NXO-6840-16' Kallos Top Rail 16'	806615	806665	806666
3	NXO-6840-12' Kallos Top Rail 12'	806616	806667	806668
4	NXO-6840-8' Kallos Top Rail 8'	806617	806669	806670
INSERT PANELS				
5	NXO-PANEL 8' Insert Panel Kit (Level)	806618	806671	806672
6	NXO-PANEL 6' Insert Panel Kit (Level)	806619	806673	806674
7	NXO-PANEL-RAKE 35° 6' Stair Panel Kit	806620	806675	806676
8	NXO-PANEL-RAKE 35° 8' Stair Panel Kit	806621	806677	806678
9	NXO-ADJ-PANEL 6' ADJ Insert Panel Kit	806622	806679	806680
OPEN MID RAIL PANELS				
10	NXO-OMR-PANEL 8' Open Mid Rail Panel Kit	806681	806682	806683
11	NXO-OMR-PANEL 6' Open Mid Rail Panel Kit	806684	806685	806686
12	NXO-OMR-PANEL-RAKE 6' 35° Open Mid Rail Stair Panel Kit	806687	806688	806689
GLASS INFILL KIT (GLASS NOT INCLUDED)				
13	NXO-GLASS 5' Glass Bottom Rail Kit Textured Black	806623	806690	806691

NOTES:

Stair Panel Kit | Adjustable 32°-37°

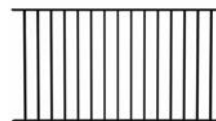
Adjustable Insert Panel Kit | Adjusts 0-40°

Open Mid Rail Stair Panel Kit | Adjustable 32°-37°

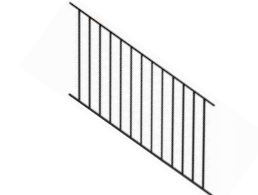
NXO-6840



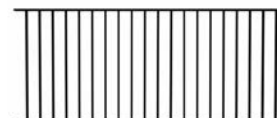
NXO-PANEL 6'



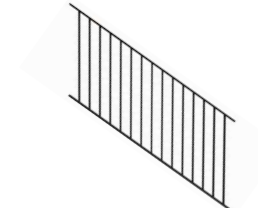
NXO-PANEL-RAKE 6'



NXO-PANEL 8'



NXO-PANEL-RAKE 8'





# RAIL, INSERT PANELS, POSTS



TEXTURED  
BLACK



WHITE  
CLOUD



TEXTURED  
BRONZE

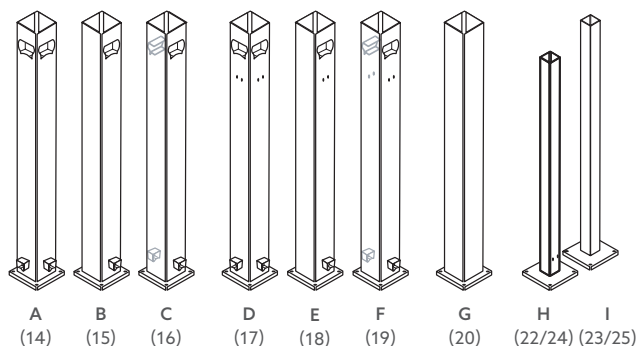
DESCRIPTION		BLACK	WHITE	BRONZE
KALLOS POST KITS				
14	NXO-POST Kallos 3-1/2" 90° Post Kit	806624	806692	806693
15	NXO-POST Kallos 3-1/2" End Post Kit	806625	806694	806695
16	NXO-POST Kallos 3-1/2" Line Post Kit	806626	806696	806697
KALLOS OPEN MID RAIL POST KITS				
17	NXO-POST-OMR Kallos 3-1/2" 90° Post Open Mid Rail Kit	806698	806699	806700
18	NXO-POST-OMR Kallos 3-1/2" End Post Open Mid Rail Kit	806701	806702	806703
19	NXO-POST-OMR Kallos 3-1/2" Line Post Open Mid Rail Kit	806704	806705	806706
UNIVERSAL POST KITS				
20	NXO-POST 3-1/2" Blank Post Kit	806627	806707	806708
21	NXO-POST 3-1/2" Bottom of Stair Post Kit	806628	806709	806710
CROSS OVER LINE POSTS				
22	NXO-POST 1.688" Heavy Line Post Kit <i>(see notes below)</i>	806629	806711	806712
23	NXO-POST 1-5/8" Stair Line Post Kit <i>(see notes below)</i>	806630	806713	806714
OPEN MID RAIL CROSS OVER LINE POSTS				
24	NXO-POST-OMR 1.688" OMR Heavy Line Post Open Mid Rail Kit <i>(see notes below)</i>	806631	806715	806716
25	NXO-POST-OMR 1-5/8" Stair Line Post Open Mid Rail Kit <i>(see notes below)</i>	806632	806717	806718

## NOTES:

**Included With Posts** | Hardware & brackets: Ornamental post cap (3-1/2" posts only, non-lighted), Baseplate cover, Bottom mount, Mid-rail mount (OMR), #10x1-1/2" screws, and #10x3/4" screws.

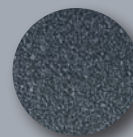
**Stair Line Post** | This 1-5/8" thin-wall design is taller to allow cutting to the desired top rail elevation. These posts are not pre-drilled, as exact rise/run and post placement vary. The thin wall allows easy mounting with self-tapping screws, eliminating the need for pilot holes.

**Heavy Line Post** | This 1.688 heavy post has a 3/16" wall thickness for added strength and is pre-cut to fit under the top rail in level applications. Pre-drilled pilot holes for bottom mounts are included, like with our 3-1/2" end, 90°, and line posts.



## LEFT TO RIGHT:

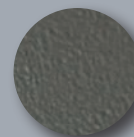
- A. 90° POST (Two mounts)
- B. END POST (One mount)
- C. LINE POST (Two mounts)
- D. OMR 90° POST (Two mounts)
- E. OMR END POST (One mount)
- F. OMR LINE POST (Two mounts)
- G. BLANK POST (No mounts)
- H. HEAVY LINE POST
- I. STAIR LINE POST



TEXTURED  
BLACK



WHITE  
CLOUD



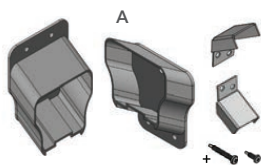
TEXTURED  
BRONZE

DESCRIPTION		BLACK	WHITE	BRONZE
STAIR MOUNT KITS - INSERT SYSTEM				
26	NXO-KIT Kallos 35° Stair Mount Kit	806633	806719	806820
STAIR MOUNT KITS - OPEN MID RAIL SYSTEM				
27	NXO-KIT Kallos 35° Stair Mount Kit	806634	806721	806722
INSERT SYSTEM ACCESSORIES				
28	NXO-KIT Kallos Straight Mount Kit	806635	806723	806724
29	NXO-KIT Kallos Mitered Corner Adjustable Mount Kit	806636	806725	806726
30	NXO-KIT Kallos 45° Mount Kit - Insert System	806637	806727	806728
31	NXO-KIT Kallos Knockdown Gate Kit (3-1/2" Posts - maximum opening size 54")	806638	806729	806730
OPEN MID RAIL ACCESSORIES				
32	NXO-KIT-OMR Kallos Straight Open Mid Rail Mount Kit	806731	806732	806733
33	NXO-KIT-OMR Kallos Mitered Corner Adj Open Mid Rail Mount Kit	806734	806735	806736
34	NXO-KIT-OMR Kallos 45° Open Mid Rail Mount Kit	806737	806738	806739
ADJUSTABLE MOUNT KITS FOR INSERT SYSTEM				
35	NXO-KIT ADJ Mount Kit for Stairs/Ramps (1 per side of stairs/ramp)	806644	806750	806751
36	NXO-KIT ADJ Bottom Mount Kit for Stair/Ramp (1 per line post on stairs/ramp)	806645	806752	806753

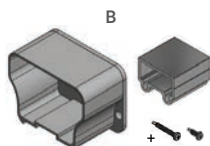
## WHAT HARDWARE DO I NEED?

Standard post hardware is **already included** in the post kit. Post anchors not included.

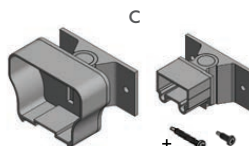
*Refer to local building codes for installation requirements; failure to install this product in accordance with building codes may affect safety of the product and void product warranty.*



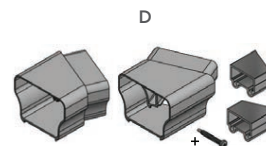
A



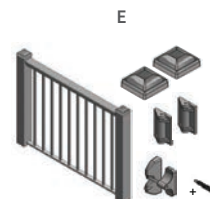
B



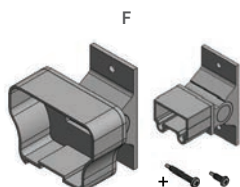
C



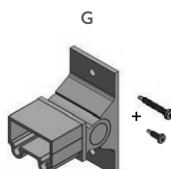
D



E



F



G

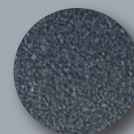
LEFT TO RIGHT:

- A. 35° STAIR MOUNT KIT — #26
- B. STRAIGHT MOUNT KIT — #28
- C. MITERED CORNER ADJUSTABLE MOUNT KIT — #29
- D. 45° MOUNT KIT - INSERT SYSTEM — #30
- E. KNOCKDOWN GATE KIT (3-1/2" POSTS) — #31
- F. ADJ MOUNT KIT FOR STAIRS/RAMPS — #35
- G. ADJ BOTTOM MOUNT KIT FOR STAIR/RAMP — #36



# MOUNTING KITS, POST CAPS, AND MORE

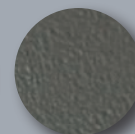
ARCHITECTURAL GRADE  
AAMA 2604 COLORS



TEXTURED  
BLACK



WHITE  
CLOUD



TEXTURED  
BRONZE

DESCRIPTION		BLACK	WHITE	BRONZE
UNIVERSAL ACCESSORIES - POST CAPS				
37	NXO-CAP Ornamental Post Cap Non-Lighted (Included in post kit)	806639	806740	806741
38	NXO-CAP Low Voltage Ornamental Halo Cap	806640	806742	806743
39	NXO-CAP Low Voltage Ornamental Combo Cap	806641	806744	806745
40	NXO-CAP Low Voltage Ornamental Downward Cap	806642	806746	806747
41	NXO-CAP Ornamental Solar Cap	806643	806748	806749
TOUCH UP PAINT				
42	NXO-PAINT Touch Up Paint 6oz Spray Can	806646	806754	806755



ORNAMENTAL CAP  
(included in post kit)  
(37)



LOW VOLTAGE  
HALO CAP  
(38)



LOW VOLTAGE  
COMBO CAP  
(39)



LOW VOLTAGE  
DOWN LIGHT CAP  
(40)



SOLAR CAP  
(41)

**3-1/2" POST KITS  
INCLUDE  
(1) ORNAMENTAL CAP**

**NEED OCEAN-FRONT RATED OPTIONS?**  
Ask about AAMA 2605 Color availability

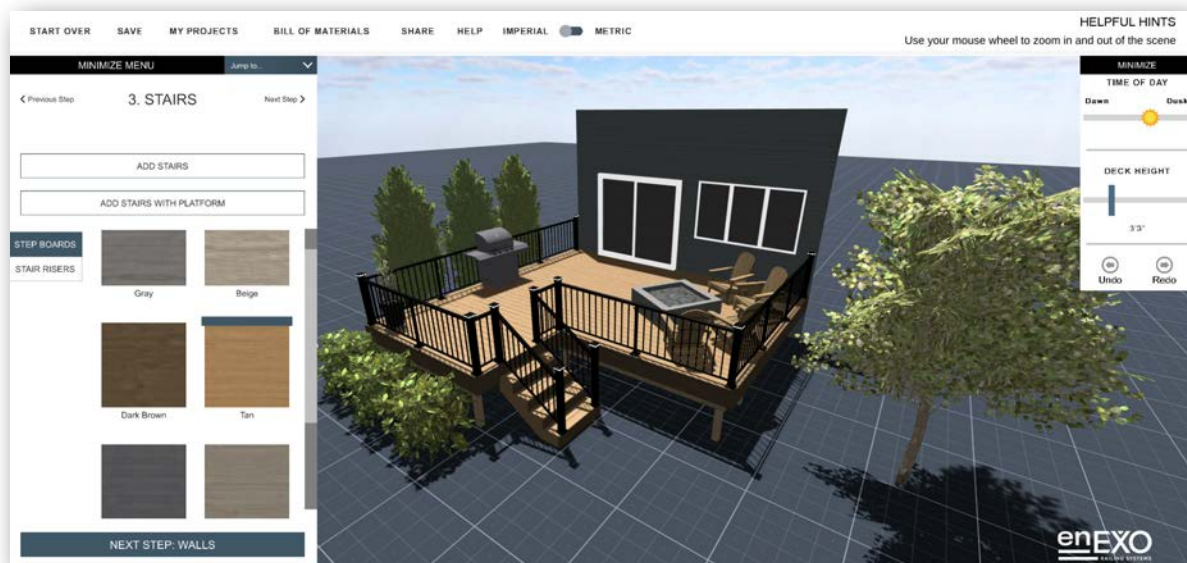
## DECK VISUALIZER TOOL

### STREAMLINE YOUR DECK PROJECTS WITH EASE

Our online Deck Visualizer Tool is designed to make your job more efficient and precise. Use it to map out deck layouts, customize designs, and select colors and materials, ensuring your vision accurately comes to life.

The tool simplifies planning by generating a detailed list of all components and materials needed, so you can order accurately and avoid delays. Save time on planning, reduce material waste, and deliver professional results with every project.

Take your deck building to the next level with this essential contractor tool!



## EXPLORE SIMPLIFIED DECK PLANNING

Visit <https://www.enexorailing.com/visualizer> or scan below:



START HERE



DECK LAYOUT



COLOR  
SELECTOR



STYLE SELECTOR



PROJECT  
MATERIALS LIST

# CUSTOMIZATION AND WARRANTY

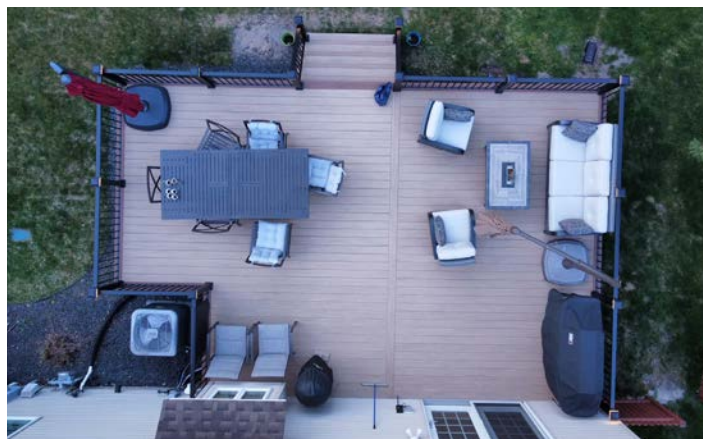
## CUSTOMIZABLE TO FIT YOUR NEEDS

enEXO's railing is designed to be customizable to match your customer's style. Combine colors or infill to design a look that is completely unique and fits the desired aesthetic.



## WE MAKE IT QUICK AND EASY TO INSTALL

Our innovative railing system is engineered to be one of the simplest and most time-efficient options available. Recent feedback shows that our system installs in half the time compared to competitors.



## 30-YEAR STRESS-FREE WARRANTY

enEXO Railing Systems (by Coffman) offers a nontransferable limited lifetime product warranty from manufacturer defects. This warranty covers cracking, peeling, blistering, or flaking and maintaining tolerances in weathering in accordance with AAMA 2604 Specifications. Lifetime shall mean 30 years.

### This warranty is in effect:

- For the lifetime\* of the owner where material is installed and applies to the end purchaser of the product whether directly purchased or through a contractor.
- Proof of purchase must be made to file a warranty claim.

**Limitations:** Coffman and enEXO Railing systems do not cover any defects caused by acts of God, such as: tornado, hail, hurricane, earthquake, flood, lightning, fire, salt, or storm damage; Damage caused by air pollution, mildew, or harmful chemicals. Harmful chemicals may also cause discoloration and should not be used to clean any enEXO products. Damage caused by foreign objects, any abuse or misuse, improper handling during transportation, or damage caused by incorrect installation will not be covered under this warranty. Misuse of the product will not be covered and will void the warranty. Labor and installation costs are not covered under any warranty.

**Care Instructions:** All enEXO Railing products should be cleaned on a regular basis. Failure to carry out correct cleaning maintenance may result in discoloration or staining depending on the environment. Recommended cleaning should be carried out on an as-needed basis but not less than annually. Warm soapy water and soft cloth should be used when cleaning enEXO Railing products.

**DO NOT Use high-pressure power washing equipment to clean enEXO Railing products.**

### TERMS & CONDITIONS

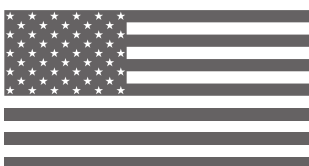
A claim shall only be initiated if proof of purchase and ownership is forwarded prior to the expiration of the warranty period by certified mail or email return receipt requested to the address below. Warranty resolution will solely be made with material provision, excluding labor.

### WARRANTY REGISTRATION REQUIREMENT:

To activate and validate this warranty, you must register the warranty online within 30 days of the date of purchase. Failure to complete the registration within the specified time frame will render this warranty null and void. Registration can be completed by visiting [enexorailing.com](http://enexorailing.com). Proof of purchase may be required during the registration process.

### Warranty Claims can be submitted to:

Coffman  
Attn: enEXO Warranty Claims  
7950 Third Flag Parkway, Suite 100  
Austell, GA 30168  
(800) 810-9204



AMERICAN MADE





**enEXO**<sup>TM</sup>  
RAILING SYSTEMS

By *Coffman*

CONNECT  
WITH US



[www.enexorailing.com](http://www.enexorailing.com) | (800) 810-9204

[sales@CoffmanSBP.com](mailto:sales@CoffmanSBP.com)

V.0125